

sliderS20

**Sistema di scorrimento
complanare a due ante
ammortizzato per pensili**

**Coplanar two-door
cushioned sliding system
for wall cabinets**

**Système coulissant coplanaire
amorti à deux portes pour
meubles suspendus**

**Flächenbündiges, gedämpftes
GLEITSYSTEM mit zwei Türen
für Wandschränke**

**Sistema de deslizamiento
coplanario de dos puertas
amortiguado para armarios
colgantes**

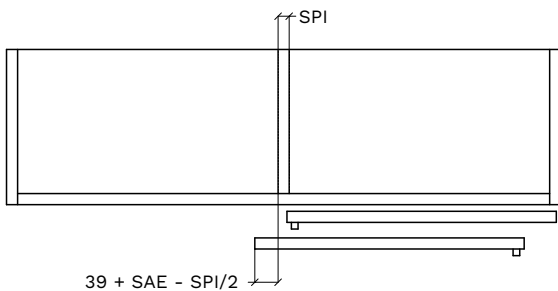
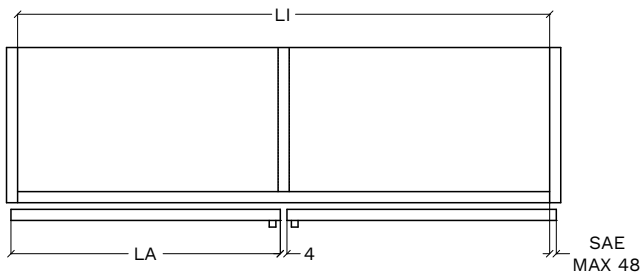
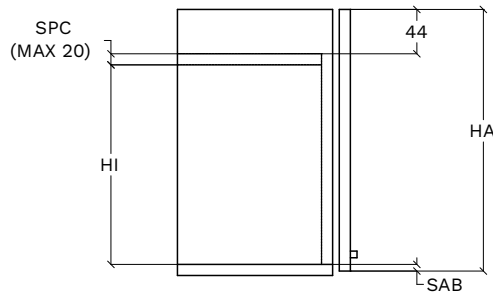
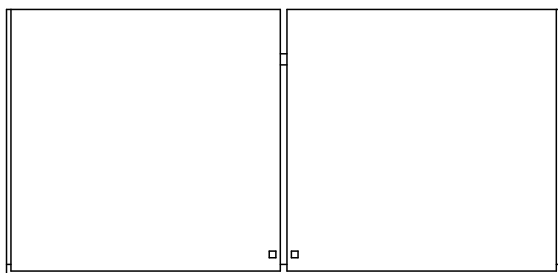
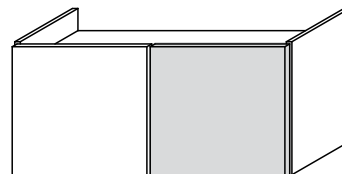
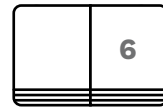
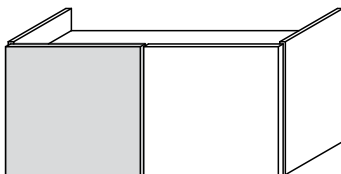
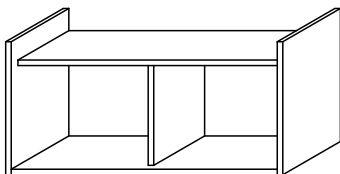
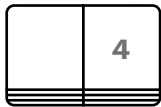
Lavorazioni sulla
struttura.
Lavorazioni sull'anta.

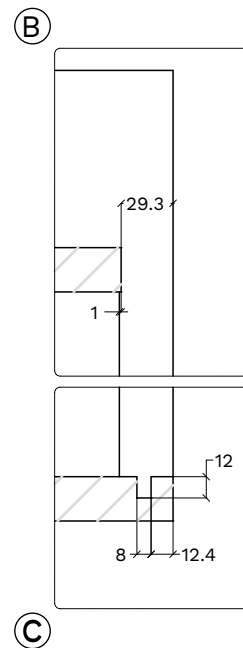
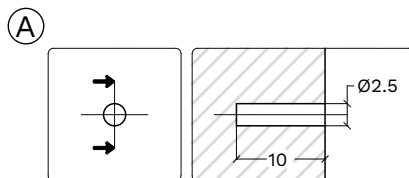
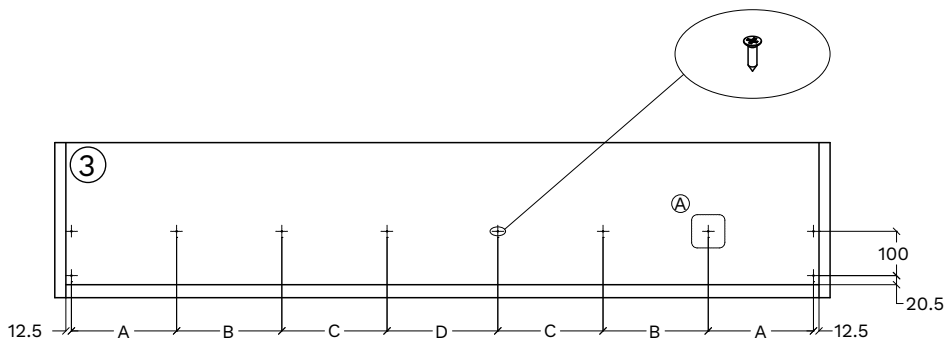
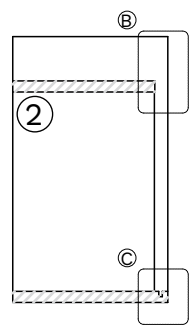
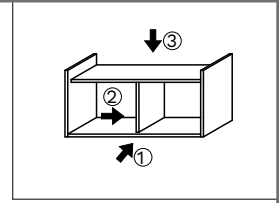
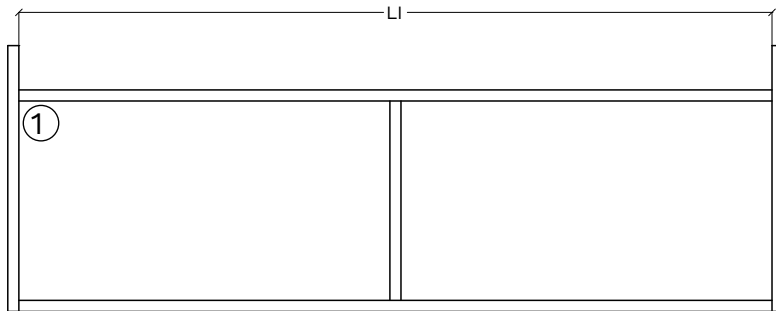
Drilling and machining
the cabinet.
Working on the door.


Usinage du meuble.
Plan de perçage de la
porte.

Arbeiten am Korpus.
Bearbeitung der Tür.

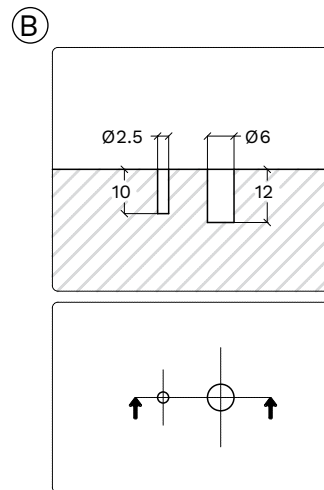
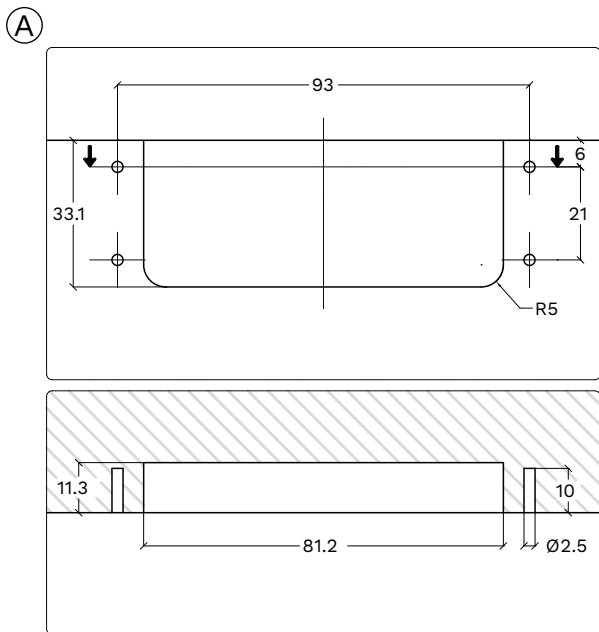
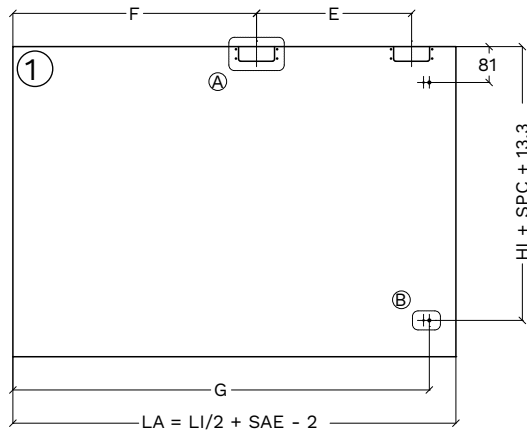
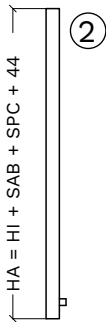
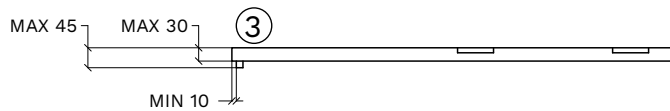
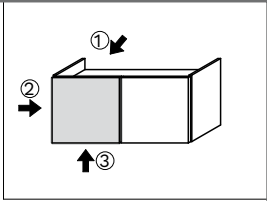
Trabajos en la estructura.
Trabajos en la puerta.





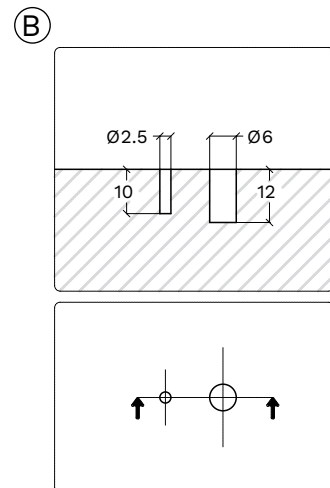
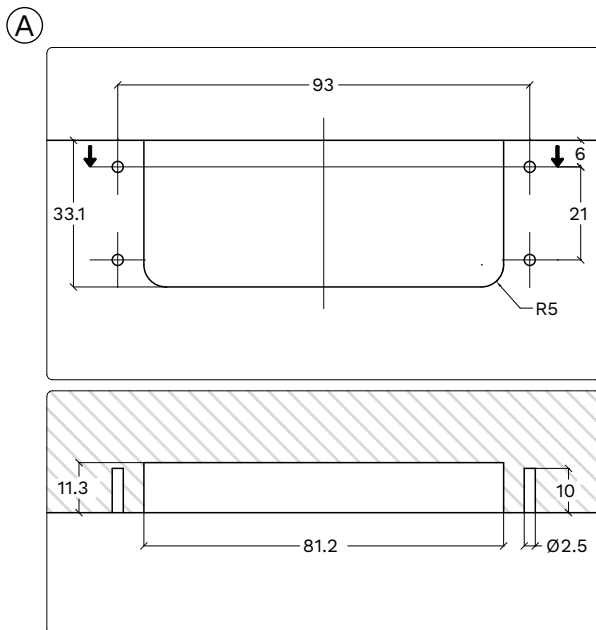
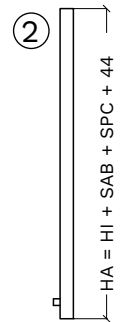
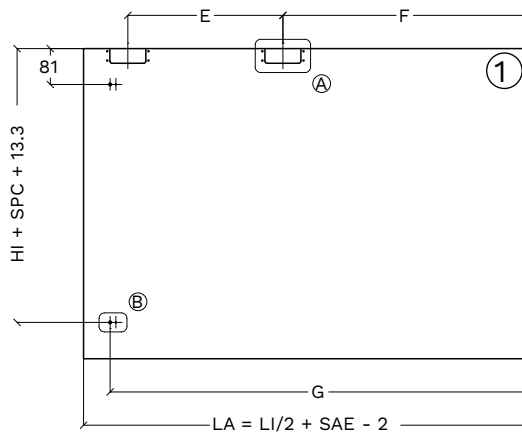
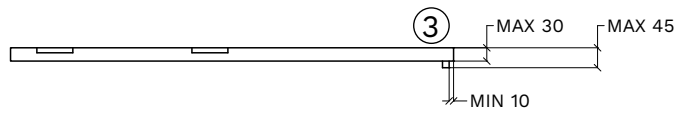
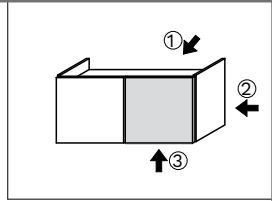
LI	A	B	C	D	
1162	208	-	246	229	x 8
1362	258	-	276	269	
1562	307	-	307	309	
1762	347	-	347	349	
1962	387	-	387	389	
2162	305	305	305	307	x 10
2362	333	333	333	339	
2562	362	362	362	365	
2762	391	391	391	391	
2962	419	419	419	423	

LI	E	F	G
1162	205.5	309	566
1362	255.5	359	666
1562	305.5	409	766
1762	355.5	459	866
1962	405.5	509	966
2162	455.5	559	1066
2362	505.5	609	1166
2562	555.5	659	1266
2762	605.5	709	1366
2962	655.5	759	1466



NO SCALE

LI	E	F	G
1162	205.5	309	566
1362	255.5	359	666
1562	305.5	409	766
1762	355.5	459	866
1962	405.5	509	966
2162	455.5	559	1066
2362	505.5	609	1166
2562	555.5	659	1266
2762	605.5	709	1366
2962	655.5	759	1466



sliderS20

